

When quality search begins

## Profile

We are working in conflict zones and disaster areas globally.

### Contacts

Kabul-Afghanistan  
Haji Fareed Noorzai

Cell: +93 (0) 799 44 44 42      +93 796 444444

Cell: +93 (0) 799-88-00-99      +93 7777 678 66

United Arab Emirates

Mirwais Jahangir

Cell: +971-555-86-2006

United States (USA)

Mari Atmar

Cell: +1 703-861-8678      USA

Libya & Iraq

Cell: +971 52-840-67-97 UAE

Pakistan Islamabad

Cell: +92-308-620-2894 PK

**United Arab Emirates. B.O.BOX 95885 Sharjah**

When quality search begins

## ILHAM COMPANY

Ilham Company working at global Business parts

United Arab Emirates- Afghanistan - Qatar- Iraq -Libya - Africa –  
Construction, Transportation & Logistics and Fuel Supply .....

**ENGINEERING, CONSTRUCTION & CONSTRUCTION MANAGEMENT,**  
We are working in conflict zones and disaster areas globally.



*US Army Corps of Engineers*



United States Marine Corps



Where quality search begins

**Ilham Company working In all over of Afghanistan  
And our more intersted to southern of Afghanistan  
Ilham Company Completed more Projects by Subcontract in Afghanistan  
At Camp Gambiri & ANP Nangarhar– Shorabak Helmand – Camp Dwyer Helmand  
Sangin & musa Qala Helmand & Kandahar &  
Farah and Nimrooz ....and at 24 province**



Where quality search begins

## COMPANY BRIEF INFORMATION

**Company Name: Ilham Tech Construction Company**

**Abbreviation: I.T.C**

**UAE-Business License No: 607538 P.O Box 95885 Sharjah**

Address: Main office: United Arab Emirates  
Add: 2- Kabul-Afghanistan Baraki Kalemzai Tower F5

Email: [ilham.constructionuae@gmail.com](mailto:ilham.constructionuae@gmail.com)

Authorized Persons to Sign the Proposal & Negotiation

Name: **Mirwais Jahangir**

Title: President

Telephone: +971 (0) 555 86 2006 (UAE)

English

Arabic -Urdu-Persian-Pashto –

Authorized Persons to Sign the Proposal & Negotiation

Name **Mari Atmar**

Title: Partner

Telephone +1 703-861-8678 United States (USA)

Telephone +971 52 840 67 97 United Arab Emirates (UAE)

Email: [mariatmar3@gmail.com](mailto:mariatmar3@gmail.com)

Signature

---

Date: / /

When quality search begins

## TO WHOM IT MAY CONCERN

Dear Mr. / Madam

I am enclosing with this letter some sheets containing basic information regarding our Company called **Ilham** Company would you be kind enough to Read these sheets and get familiarized with our company's name and address, we believe That this information will benefit your organization And produce more effective relation with us.

You are welcome to contact us any time and setup an appointment to discuss mutual Cooperation between our two organizations that could possibly be established in future in The interest of the Afghan people and the international community as a whole.

I trust you will find that the **Ilham** has the team of well informed, experts, talented, Professionals to meet the challenging timely executing and compellation works of

Projects. We are able to handle large size projects with the same excellence & attention To detail as we would on smaller ones, our experience cover a wide variety of Construction & engineering works and we seek to set a standard in our field We are looking forward for your positive response; please do not hesitate to contact us For any further information or clarifications you require according the **I.T.C** needs

I feel proud to take this opportunity to assure you of our sincerity, honesty and good Quality of work in any joint venture and to offer you and your colleagues our warmest Wishes and regards.

Yours truly,

---

Eng. Mirwais Jahangir  
President of Ilham Company

## INTRODUCTION

Ilham Company is the one of leading & fast growing young construction.

In order to compete at this challenging market, throughout of our long time experience in Construction field and history in the Afghanistan.

We have established and maintained long-term Relationships with quality architects, engineers, Designers and subcontractors in multiple states, Guaranteeing the quickest possible delivery time to market.

We have the ability to manage

Projects from conception to completion in a close team

Environment with real estate professionals,

Consultants, users and owners. We can provide a full

Spectrum of services from initial consulting

To single-source design/build.

Ilham Company ANP Project  
**US ARMY CORPS OF ENGINEERING ANP PROJECT IN AFGHANISTAN**  
**Nangarhar Province by Subcontract**



Where quality search begins

## GENERAL

We are an international, full-services architect, engineering and builder based at global. Our process enables our customers to make informed, intelligent business decisions, and we are dedicated to providing customers with solid resolutions to specific project challenges, resulting in a success full product every time.

## ABOUT US:

Throughout our 10-years history in the Afghanistan. And now for Iraq and Libya We have established and maintained long-term relationships with quality architects, engineers, designers and subcontractors in multiple states, guaranteeing the quickest possible delivery time to market. We have the ability to manage projects from conception to completion in a close team environment with real estate professionals, consultants, users and owners. We can provide a full spectrum of services from initial consulting to single-source design/build. **Ilham** owner-centric approach and strategic delivery process allow us to incorporate the customer's specific business objectives into each project, ensuring customized, consistently dependable solutions. We provide a single point of fiscal and administrative responsibility, making it possible for customers to focus on project definition rather than on architect and subcontractor issues. This approach delivers efficiency and flexibility, minimizing time delays and eliminating lost revenues.



## **Fuel Supply and Services: Ilham. Fuels**

Fuel is used to power anything, from cars to airplanes to toy motor boats. It is the lifeblood of our transportation system. As our technology advances, society is able to use several natural and man-made sources to power our vehicles. This article will explore the different types of fuel and their properties.

Our company has done more than just process rock. With over 3 stationary aggregate facilities, a hot mix facilities and a ready mix facilities Ilham., along with our affiliates, is able to provide Fuel Supply of exceptional quality.

This capability in conjunction with our Fuel services department provides every customer a product that meets or exceeds required performance standards. From patios to airport runways our Fuel operations supply that will perform for years to come.

To achieve optimum performance, aggregates used for demanding standards that require skill and attention to detail not commonly found in our industry. Use of Professional materials is a concern for all of our operations as we explore ways to improve our environment and reduce our consumption of limited resources.

Supplying and Services of Fuel and making it better is not as easy as it seems. It requires equipment to size it, clean it, sort it and deliver it.

While all this is accomplished, we never lose site of the importance of safety. A core belief at Ilham. is that if we can't do a job safely, we will not do it...

Ilham. Provides different types of fuels to its customers all over Afghanistan.

The Company has vast 5 years' experience, in Fuel operating; company has world class vehicles with well qualified drivers and helpers for delivering the fuel loading and unloading in various parts of Afghanistan.

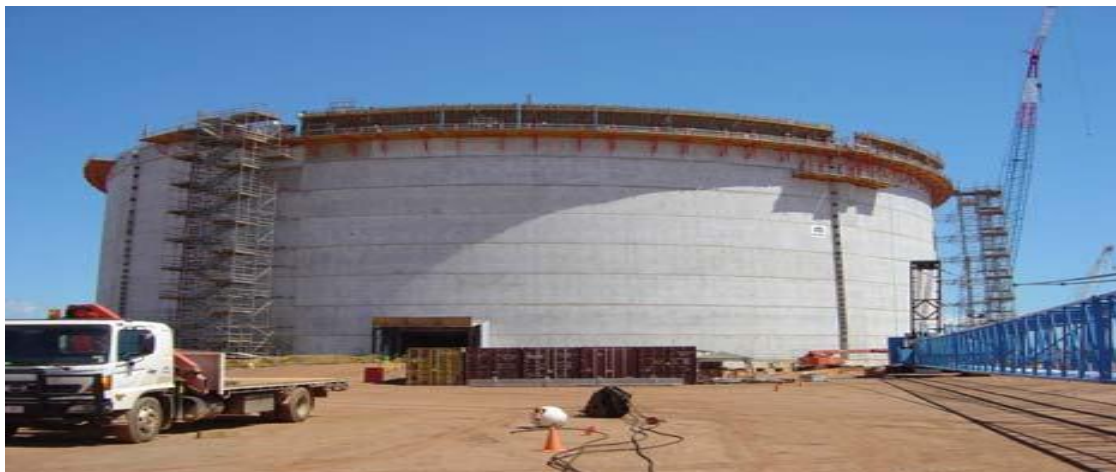
Ilham. is always ready to handle any kinds of consignment anywhere you want.



Where quality search begins

## Fuel Supply and Services:

**Ilham. Company completed more projects of fuel supply's  
In Afghanistan**



Where quality search begins

## Super Guard Vehicle Tracker PT-03

GPS location

- GSM/ GPRS interface (for communication/ GPS data transmission)
- Hands-free and cell phone capabilities
- Built-in shock sensor (alarm through siren, Control Base, short Message to vehicle owner's mobile phone)
- Wireless History Upload (internal 256KB EEPROM), wireless Firmware upgrading of car unit via GPRS
- Car remote interface to receive commands from Control Base or User's GSM phone (door lock/unlock, engine shut down, car battery Status/off, flash lights)
- Li-Ion Battery Pack (up to 24h stand-by without car battery support)

Location, monitoring, tracking through GPS in real time status

- Connectivity through GSM terminal, GPRS Socket, phone/ fax modem, Data Call
- User-friendly interface/ quick access to vehicle and user database
- Easy setup/ editing / initializing of additional car units
- Fast GSM interface to user database (vehicle units/ mobile phone numbers/ contacts)
- Up to 5 Individual Geo-Fence setup for each car
- One-click command-List (activate/ disarm vehicle unit, door lock/ unlock, engine on/off) and query
- Write and send short messages
- Real-Time monitoring of Tracking Objects (20 sec interval and up)
- Archive/ Upload History over
- Create and Edit Points of Interest (POI)
- Add map layers/ Move/ Zoom functions
- Extensive Map/ Location Search function, Shortest Path/ Route Planner
- Online Upgrade Function



Where quality search begins

## Refrigerated trucks

**Ilham Company.** Has its own fleet of reefer truck of all sizes and all our Refrigerated Truck, are Auto Trans, A/C, Pass PW, Seats 3 25,900 GVW (Non CDL) 20' Kid Ron Van Body, Deep Extruded Aluminum Floor, Thermo King CB Max Reefer Unit, Fresh Service, 50% Rubber, Hyde Brakes Very Clean and Well Maintained, Truck is ready to work.

## DRY VAN

**Ilham Company** has been transporting grocery merchandise and produce in major distribution centers such as Kabul, Jalalabad . Mazar, Kandahar etc. Our capacity in equipment makes it

easier for our customers to choose the best equipment to fit their needs. Amount of equipment is always expanding along with the need of our customers

Our customers can track their freight at any given time. Drivers are required to check in every two hours with their dispatchers. Also, drives are required to report to our customers once a day to keep them updated.

### Box info:

ISO Code : 40 ft. 9'6 NEW REEFER

Box manufacturer :

Inside material : Stainless steel

Outside material : MGSS



Where quality search begins

## OUR MISSION:

We believe that a successful project is one that communicates well, and our uncompromising attitude toward the open and honest exchange of information between contractor and client allows us to best accommodate particular project requirements. We invest heavily in construction related research and development, and we embrace new challenges and ideas, always seeking opportunities to transform construction methods and applications. We are dedicated to collaborative, analytical management and proficient scheduling, and are devoted to providing our clients with a smooth, efficient transition from pre-construction to occupancy.

## K-Span Project



### BACKGROUND

Afghanistan is a country of different cultures, communities and climates. Due to war and economic instability construction of necessary infrastructure was for many years not undertaken, however recently especially since the increased international attention on Afghanistan; the country has been given the opportunity to rebuild the necessary infrastructures for society.

Construction of necessary infrastructure including schools, energy supplies and roads needed throughout the entire country and construction work has commenced.

**I.T.C** was established in 2003 to address the need for the construction of infrastructure in Afghanistan to assist in the development of the country. **I.T.C** main office is located in Kabul. **I.T.C** plans to establish others sub offices in other provinces of Afghanistan in the near future.

**I.T.C** is a group of construction expert engineers and supporting staff **I.T.C** with expertise in civil engineering, geology, hydrology and irrigation engineering. Construction work by **I.T.C** is undertaken according to the universal act formula and regulations.

**I.T.C** in the past and continues to provide quality construction works in a number of provinces in Afghanistan **I.T.C** is also is an institute for recent engineering graduates from different faculties of engineering, providing technical and practical training as well as field experience for graduates would like to establish their careers in different fields of engineering.

**I.T.C** is a will organized group providing quality services in the fields of construction of highways and building divisions. **I.T.C** highways division consists of highly experienced personals who believe in quality rather than quantity. In addition to this **I.T.C** building division has also experienced engineers and supporting s



When quality search begins



## CONSTRUCTION MANAGEMENT PLAN

### **1. Construction Management Services**

AT **I.T.C** (Ilham Company), construction management Services provide assurance to the owner of a well-run, problem-free job site. The team of Experienced construction

Professionals provides cost control, scheduling coordination, Quality control and timely execution of plans throughout the project. **I.T.C** (Ilham Construction Company)'s knowledge of local building codes, life safety Requirements, permitting and other local nuances in the construction process is critical in the project's on-time and on-budget completion according to plan. The owner's interest is reaper Scented throughout the project, from start to finish, ensuring schedule compliance, Coordinating proper document control and Optimizing the owner's investment in the project.

**Ilham's** Project manager is responsible of any coordination and time to time supervision of both design and construction teams.

Design team member will also visit the site on timely basis for successful implementation of this project for preventing any mistake on implementation of the design at the site.

**ILHAM** own a large number of construction equipment and this is another important

**ILHAM** feels that more technical personal is needed on the project site will support this requirement by our other technical staff at the main office or ask the assistance of some other partner firms they previously worked with.

Project Management:

**ILHAM** has always tried to implement the projects

According to the contract scope of work and technical specification  
To meet the customer requirement.

**ILHAM** has already selected a qualified project

Construction team including a project manager with great experience  
With international organizations.

## When quality search begins



### Construction coordination

In order to prepare accurate pricing for the projects, ILHAM has already completed civil, architectural, mechanical, and electrical conceptual designs with the participation of senior staff and our quality control Manager. Upon award, the project site team assists in establishing the performance standards for the trade along with participating in the constructability review and coordination of the various inter-related design documents.

Coordination meeting will be regularly scheduled with the design team to address submitted program of work and deficiencies, as well as to provide for collaboration on design development. These meeting will minimize time lost in addressing unforeseen field condition, and expedite resolution of any site-specific design issues that may arise.

### Construction process Management

ILHAM will execute the project with duration in accordance with the approved working document, program plans, specification, and the project schedule. The PM will work closely with our procurement and subcontractors manager onsite to expedite the scheduling and finalization of subcontractors and purchase order such that the construction schedule. The PM will report assigned government representative on a daily basis. The PM will implement and manage, along with the entire field team

### Management, Planning, and Reporting

ILHAM developed an integrated management plan that incorporated a master schedule and presented a baseline budget. We prepared a project focused Quality Control and Health and safety plan, which addressed site condition and evaluate ILHAM,s. After discussions with Recon International we established a project specific work based schedule. Our monthly program report compared our actual program to the progress made as well as any changes made to site condition.

### Worksite Activity and Coordination

ILHAM informed the client and facility representative of daily progress made, brought up issues that requires their input; and report on problem resolution. Our construction Manager (CM) keeps informed the client on technical issues and developments. The CM and his onsite management team meets daily with our subcontractors to discuss the progress made since the previous day identify and resolve project issues and review the upcoming work. The CM meets daily with ILHAM project management team to evaluate adjustments required and client and to finalize the next day activities. The

## When quality search begins



superintendent verifies that materials and equipment's needed for the following week are on the hand.

### Construction Activities



The construction materials are provided from a far space from the site location.

We use all our machinery e.g. Dump Truck, Water Tank, Fuel Tank, Loader, Grader, Bulldozer and Excavator. During construction we maintain daily Logs to document activities completed quality Control inspection, inspection results and any required Follow up sub-contractors and personnel on site Materials and security issues caused by the war-Team environment add complexity to the Construction activities and imbedded the delivery Of critical equipment's.

### ADMINISTRATION

Since we start our works, **Ilham** corporate offices have been based in Kabul & Kandahar our seasoned teams of professionals provide support for our widely dispersed field operations throughout the country.

From general accounting to treasury and risk management, to contracts and corporate development, our well-trained staff provides both quality support and satisfies the extensive reporting requirement required of public companies. As one of the area's largest employers, **Ilham** corporate offices offer 100+ employees with quality of life and satisfying career opportunities.

### COMPANY STRUCTURE AND BOARD OF DIRECTOR

**Ilham** has board of director which they are the ultimate and highest source for decision making. We have expert and professional qualified engineers & management persons. We adobe international management procedures that we have weekly and monthly meeting regarding the progress of the works as well as we discuss about every department needs and problems.

The company has a very well experienced office and field staff. Our engineers have the capabilities of planning, estimating and analyzing various types of big/small projects and the abilities of practicing and exercising those projects in the field. **Ilham** construction Enterprises reviews all contract documents carefully, and, the management implements the same systematically, ensuring quality performance, all



## Where quality search begins

Over, for the most satisfaction of the client of the client. All works are complete with necessary guarantee of the raw materials and workmanship

### AIMS

The company aims to perform its profound experience in construction business while operation in difficult conditions of Afghanistan. The company is active in construction, engineering, renovation and design works. Our head office is in Kabul and we have an operative office in Afghanistan.

The company's vision is to provide high quality services in the required time frame with a reasonable price. Customer satisfaction is the biggest virtue that we are trying to offer to our clients. The engineering and management staff of the company is a mixture a talented and experienced people who are skilled in various aspect of the construction business. We are trying to choose our people among the ones who can adept themselves to our corporate principles which aim to serve the welfare of a developing nation.

The corporate mission is to contribute as much as it can to the development process of Afghanistan.

For the reason, the company is very willing to accomplish projects that can improve the life conditions of Afghan people such as Hospital construction, School Construction, Sporting Complexes and Housing; we would like to play a significant role in reconstruction of Afghanistan.

The company is operating with a management and engineering team consists of more than 100+ professional individuals that have been chosen among skilled Afghan people. The company has flexibility to increase the number of the skilled personnel due to the requirements of the projects. For the time being, the company is working with international Donors and Organization.

**Ilham** and its partners can present the construction experience, the construction technologies and the design capability required to be completing and size and type of above mentioned construction projects in Afghanistan successfully.

My desire for

**Ilham** is to facilitate reconstruction efforts in Afghanistan by providing quality and timely service on all of our projects. One of our core values is be an example of honest and successful work. My team and I are using all of our resources to effectively support the reconstruction efforts in Afghanistan. I encourage others to do so also

When quality search begins

## SCOPE OF SERVICES

**Ilham** is a construction company providing quality construction projects. **Ilham** in the past has worked on a number of different project areas including:

1. Highways (example given below) including
2. Building constructions
3. Hydro power stations
4. Irrigation and water supply systems
5. Road and bridge construction



**The board of directors is formed by the responsibility of the following sectors:**

1. Managing director
2. Head of engineering department
3. Administrative department
4. Chief survey and designing
5. Chief construction engineer
6. General management



## When quality search begins



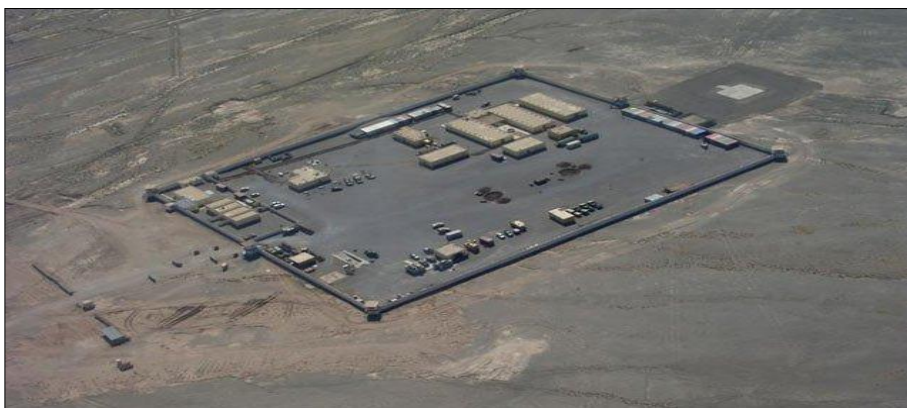
### Highways

Highways play an important role in the development of any country and community. **Ilham** has constructed many highways, urban and local roads always keeping in mind all respects of safety and durability. The **Ilham** highways division consists of three main departments:

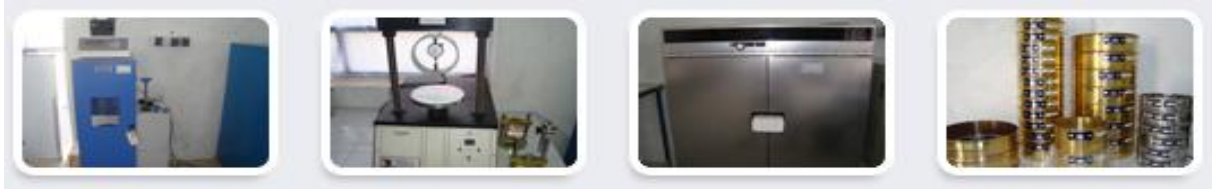
#### Surveying, mapping and designing departments :

**I.T.C** uses new and trustworthy equipment for topographical surveys as shown in fig 1.1. All **I.T.C** equipment's are free of errors and quick results are oriented. Three semi highways have been surveyed and designed by **I.T.C**. All highways were approved by donors. The survey and mapping department is run by the chief surveyor and land survey specialist.

All the topographical data was collected on site and used for the alignment of the highways. During the geometrical design of highways all topographical situations and safety measures are taken into consideration by qualified staff.



When quality search begins



## 1. SOIL TESTING

**I.T.C** quality control is undertaken by the design department of **I.T.C**. The **I.T.C** has highly qualified technical staff and a well equipped laboratory. Quality assurance is one of the main goals of **I.T.C**. If further information on quality control guidelines and forms and safety guidelines are needed these can be provided upon request.

**I.T.C** has the following testing facilities which have been established under the full supervision of the general construction manager. **I.T.C** provides the following materials testing facilities:



- Soil classification
- California Bearing Ratio (CBR)
- Standard penetration test (soil bearing capacity)
  - Liquid limits
  - Plastic limits
  - Plasticity index
  - Sieve analysis
  - Mix dry density
  - Field density
  - Group index.
- Unite weight (dry, wet)



When quality search begins



## 2. Stone Testing Stone classification

- Stone soundness (with sodium sulphate and magnesium sulphate).
  - Stone abrasion test
  - Water absorption test
  - Freezing and thawing
    - Unit weight
- Load bearing capacity (load crushing capacity)
  - Strength
  - Sieve analysis



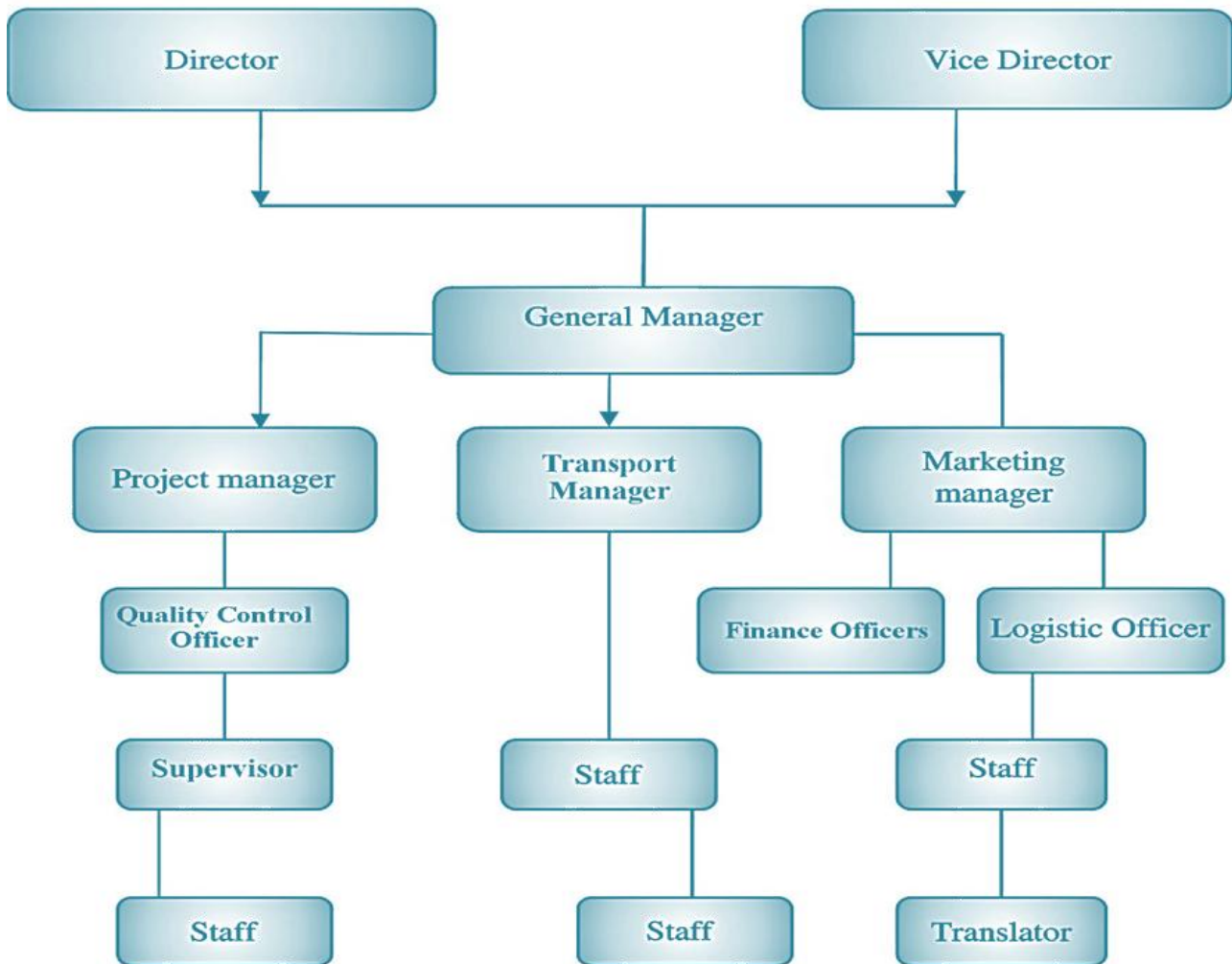
## 3. Concrete Testing

- Concrete mix design
- Water Cement Ratio (WCR) Slump test
  - Temperature test
  - Air contents
  - Unit weight
- Compression Test
  - Strength



When quality search begins

## Organization Chart



ITC consists of the following key personnel

- General Director
- Technical advisor
  - Supervisor
    - Deputy Director
- Administration and finance officer
  - Office assistant
- Logistics assistant
  - Chief engineer
    - Designer
    - Surveyor



## When quality search begins

### 1.1- Mobilization of Staff, Equipment's, Tools and Machinery:

Mobilization of staff, Equipment's, tools and machinery will be done after the site assessment and arrangement of secure and safe place for **I.T.C** accommodation and storage.

### 1.2- Site cleaning for construction work.

The site properly cleans before starting of construction activity of the project to avoid any disturbance to the construction work process. The work site perimeter will be cleared and grubbed. Clearing will involve unskilled labors equipped with picks and shovels and if necessary light machinery shall be used.

### 1.3- Supply of construction materials equipment's:

All equipment, material, and articles incorporated into the work covered by OUR all will be new and of the most suitable grade for the purpose intended. It will be **I.T.C** according to the specification and code of construction which are given in the contract.

### 1.4-SITE WORK

The OUR engineering team will conduct a proper site assessment for the implementation of the project and collect all measurements and data from the site which is needed for the project. The OUR shall locate and layout the plate form / concrete pad in **I.T.C** accordance with the drawings and **I.T.C** accordance with the contracting officer Representative direction / approval prior to excavation and construction. The excavation and grading shall be done **I.T.C** according to the below procedure.

#### Excavation:

The following aspects shall be given to the excavation during the construction of the faculties.

- The excavation shall be done along the profile with width and depth as per drawing.
- The bottom level of excavation for foundation of reinforced concrete shall be properly leveled.
- Foundation excavation shall extend an adequate distance from both sides to allow for placing and removal of forms.
- The surface water shall direct away from the excavation to prevent erosion and undermining the foundation by constructing diversion ditches.

The excavation shall be excavated I.T.C according to the technical requirements of the scope of work and statement of work.



## When quality search begins

### Grading:

The grading shall be done after the excavation of foundation: the sub – grade shall be of compacted soil 95 %.,



### Placing of Concrete:

For the placing and working of concrete the following specification and description shall be considered during the construction of concrete structures. The **I.T.C** concrete strength shall be 3000 psi for the construction of foundation and walls.

### Ingredients of concrete:

The concrete is composed of coarse aggregate, fine aggregate, cement and water. Cement acts as binding material. ,a rock chip is used as coarse aggregates whereas sand is used as fine aggregates. Clean water is used to put all the ingredients together to form hardened concrete. Quality of concrete will depend on the quality of its ingredients.

### Rock Chips:

Rock chips are the main constituents of concrete and occupy the bulk volume of concrete. The following are the desired qualities of aggregates:

- Aggregates shall be of desired size.
- All aggregates must clean and free from foreign particles.
- All aggregates must be hard and its strength must be desired value.
- Aggregates must be well graded.





### Send

The following are the desired qualities of sand:

- Sand as fine aggregates must be clean and free from foreign particles
- Sand must be well graded
- Fineness modulus of sand must be of desired value.

### Cement:

Cement is generally tested before use and the tests are:

- Fineness
- Setting time
- Compressive test

### Water:

Water for mixing concrete should have the following qualities:

- Water should be free from impurities
- Water should be clean

### Mix Ratio:

The ratio of cement, sand and aggregate will be by volume. The strength of concrete depends on the ratio of concrete. The ratio of concrete is expressed as 1:3:6, 1:2:4 or 1:1:5:3. 1:2:4 is considered in most cases. For high strength of concrete 1:1:5:3 is used.

Mix ratio is measured by standard a basket that contains a bag of cement. The size of the standard bucket is 45cm height, 30 cm length and 30 cm width (volume 1.25 ft<sup>3</sup> or 0.035375m<sup>3</sup>) as sand increases in volume with presence of small amount of water in it, this increase of volume of sand due to bulking of sand should be considered while volume calculation of sand. In the case of 25 % bulking of sand, the volume of sand to be considered would be 1.25 times the original volume.

### Water Cement Ratio:

The strength of concrete depends on water cement ratio. The water content ratio is calculated on the basis of weight of water and cement. The amount of water in concrete will be such that the fresh concrete will be workable as well as hardened concrete will have enough strength to withstand desired loads. Excess water decreases the strength of concrete.

We know one bag of cement is 50 Kg. if its water cement ratio is 0.55. Then water will be  $0.55 \times 50 \text{Kg.} = 27.5 \text{ Kg.} = 27.5 \text{ Liters.}$

### Mixing of Concrete:

- The volume of casting is comparatively smaller quantity mixing will be done by hand mix: otherwise mixture machine may be use.
- Mixture shall be homogenous.
- 5-10 % water of total volume shall be put on turning drum before cement, sand and aggregate are applied for mixing.

### Carrying and Placing of:

After mixing of concrete it should be carried to the specified sites as quickly as possible. All mixed concrete place with at final position within 45 minute. Mixed concrete shall not be placed beyond 1m height. Excess water should not add while placing or vibrating the concrete.



### Vibration of Concrete:

Concrete should be compacted by means of vibration. It can be done by means of vibratory or poking concrete with the help of rods .all vibration will be completed before initial setting of time,. Vibration will compact of fresh concrete. In absence of vibrator, 16mm diameter rod can be used as vibrator.

### Curing:

Curing increases the strength of concrete. Cement contains some chemical ingredient that require to hydrolysis for chemical reaction to form a rock like substance. The reaction takes place up to 21 to 28 days. For this reason, curing of concrete is required to be done for 28 days. Curing is an environment that helps hydrolysis of cement. It is generally done by spreading water to the concrete surface or covering it with wet sacks so that the water in the concrete does not evaporate. It is generally started after 16 to 24 hour of casting.

### Quality Control of Concrete:

Concrete is produced from cement, coarse aggregates, fine aggregates and water. As a result, quality of concrete will depend on many factors. A few are:

- Properties of the ingredients.
- Proportion of ingredients.
- Water Cement Ratio.
- Mixing, carrying, placing, compacting, curing etc.

After producing fresh concrete slump test should be performed. Slump test should be performed immediately after collection of the sample but not later than 10 minutes after completion of mixing. Molding of test cylinders/cubes should commence within 20 minutes after completion of mixing.

The strength requirement of concrete is given in Table below.

Strength standard deviation not exceeding: 2.1 MN/m<sup>2</sup> (3000 PSI). Minimum three samples will be required for testing from each batch.

When quality search begins



## Reinforcing Rod/Reinforcement:

The concrete can resist compression, but not tension. For this reason reinforcing rods are provided in the concrete to sustain tension that develops in concrete. The reinforcing material is high strength steel wire, mild steel, high strength plastic fiber etc. the following shall consider while checking reinforcement:

- Appropriate diameter of reinforcement.
- All rods shall be clean and rust free.
- All rods should be straight.
- Appropriate crank in rods is placed at proper place.
- Length of lapping of rods is provided as per requirement.
- Rods as per drawing are placed.
- For maintaining of clear cover chair/ space bar are provided.
- Actual size of rods is used.
- Rods should be uniform in size.
- Rods will have desired tensile strength.



When quality search begins

## Form work:

Form work is a sort of dice for reinforced concrete. It gives the shape of concrete. Any tilting of formwork creates tilting of concrete. Formwork is done by using wooden plank or steel sheet. Formwork is designed considering the weight of wet reinforced concrete. A bamboo post generally bears 100 kg. Vertical weight. In case of wet concrete having weight of 10,000 kg. Then 10 nos. of bamboo post is required to be provided.



### QUALITY CONTROL PLAN:

5.1 The **I.T.C** will establish and operate thought-out the execution of the works, a quality assurance system similar to the ISO Standard. It will be independent of any quality control or assurance measures undertaken by the engineer.

5.2 **I.T.C** will prepare the quality assurance plan that will be applied to the project and it will be reviewed and updated throughout the execution of the project as may be necessary. The AQ plan will specifically address the procedures for maintaining the project requirements with respect to the use of sub-contractors, vendors, suppliers and the **I.T.C** own personnel and will reflect the criticality of the items of materials concerned.

5.3 The **I.T.C** will keep detailed records of all quality control and QA inspection. The said records will identify the inspector, the place of inspection, the date and the time when inspection was completed, the section of the works inspected or part of the materials, and its state of completion. Reference will be made to the relevant detailed drawings and the specific aspects or properties of the works that were checked or measured will be recorded. The records of inspections and tests will be stored by the **I.T.C** at site in an orderly fashion until the completion of the defects Liability period or until such other time as may be necessary. The engineer will be allowed to inspect such records at any reasonable time.

5.4 The **I.T.C** will cooperate with the engineer and provide all necessary **I.T.C** access to records to enable the engineer to assess the **I.T.C** quality assurance system and to audit the implementation of the quality plan and associated procedures.

### 2- Testing and Approval of works:

Before use of any material it will be ensured that the material is of best quality. The project manager if deemed appropriate can refer the material for proper test for the satisfaction of QA engineer and for his approval.

5.2.1 Any testing and inspection carried out by the **I.T.C** under its own quality assurance program, the engineer will be allowed an opportunity to undertake his own testing and inspection of the works.

5.2.2 The **I.T.C** will afford and facilitate **I.T.C** access at all times for the engineer's and testing of materials and workmanship. The **I.T.C** will provide means of **I.T.C** access and assistance as may reasonably be required by the engineer. For all items of work, the **I.C.C** will give adequate notice in writing to the engineer stating that the item in question is complete and is ready for inspection the **I.T.C** will not cover up any work until the engineer has been given adequate opportunity to carry out any necessary testing and inspection.

5.2.3 For the purpose, when a completed work is ready for testing, the **I.T.C** will **I.T.C** accomplish an submit a work inspection request to the engineer. The said request will identify

## When quality search begins

among other things the particular work to be inspected and its exact location in the field. The request will also mention the type of test required to be done as well as the date and time scheduled for testing. The engineer or his representatives will sign his receipt of the work request to ensure that he was made aware of the scheduled test. The testing works will then proceed as scheduled.

5.2.4 When the testing is completed, the engineer will sign on the request to signify his attendance and will note therein his opinion on whether to allow or prevent the contractor from proceeding with the subsequent works. If for any reason the engineer will choose not to witness or be present to any testing work, the testing will nevertheless be carried out by the **I.T.C** as scheduled. If the result of the test showed compliance with the required criteria, such a result will be deemed to have been approved/ **I.T.C** accepted by the engineer, and the **I.T.C** will **I.T.C** accordingly proceed to carry out the subsequent work.

### 2.1 Deliverables.

**I.T.C** will provide the following deliverables.

### 2.2 Weekly status Report.

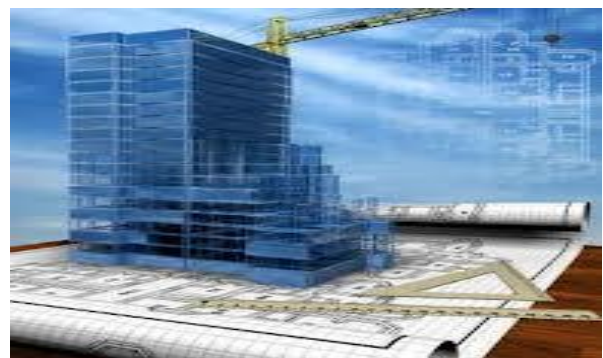
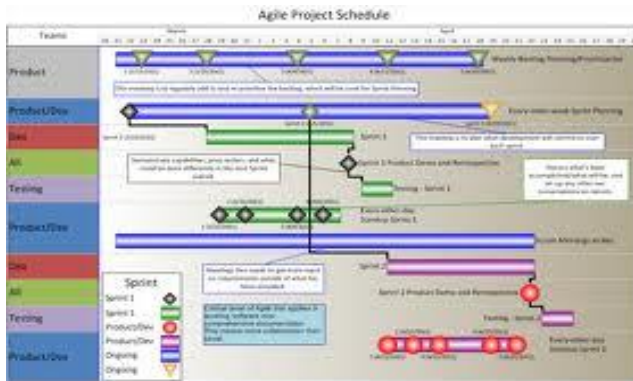
**I.T.C** through an email will describe significant events for the past week, and premeditated activities for the forth coming week. And any issues/ challenges of note on each Thursday.

### 2.3 Project Schedule

**I.T.C** will complete the construction activities within 30 days from the issue of to proceed. Detail schedule shall be submitted after **I.T.C** acceptance of proposal.

### 2.4 As build Drawing

All the attached drawing is as built drawings in Auto CAD.



## When quality search begins

### 2.5 Machinery and

List of machinery and equipment which will be used for the implementation.

### 2.5 Manpower

Priority will be given to the local people.



### 2.6 Quality Assurance:

5.4.1 The **I.T.C** will establish and operate throughout the execution of the works, a quality assurance system similar to the ISO Standard. It will be independent of any quality control or assurance measures undertaken by the engineer.

5.4.2 The **I.T.C** will prepare the Quality assurance plan that will be applied to the project and it will be reviewed and updated throughout the execution of the project as may be necessary. The AQ plan will specifically address the procedures for maintaining the project requirements with respect to the use of sub-contractors, vendors, suppliers and the **I.T.C** own personnel and will reflect the criticality of the items of materials concerned.

5.4.3 The **I.T.C** will keep detailed records of all quality control and QA inspection. The said records will identify the inspector, the place of inspection, the date and the time when inspection was completed, the section of the works inspected or part of the materials and its state of completion reference will be made to the relevant detailed drawings and the specific aspects to properties of the works that were checked or Measured will be record. The records of inspections and tests will be stored by the **I.T.C** at site in an orderly fashion until the completion of the defects liability period or until such other time as may be necessary. The engineer will be allowed to inspect such records at any reasonable time.

5.4.4 The **I.T.C** will cooperate with the engineer and provide all necessary **I.T.C** access to records to enable the engineer to assess the **I.T.C** ' quality assurance system and to audit the implementation of the quality plan and associated procedures.



## When quality search begins



One of the best features of the the HESCO is the ease in which it is set up. Get it flown in or pull it off a truck, unfold it, use a front end loader or other heavy equipment to fill it up with dirt, sand or gravel. It is not instantaneous, but the speed that it can be set up in is pretty impressive. One soldier operating a front end loader and four more unfolding the shells can set up a wall in just couple of hours. They can essentially work ten times faster than crews filling sandbags. There is a new system of set up where the barriers are loaded in the back of trailer and dropped out in a line, a few people following behind set up them up and the loader filling them. This way a wall several hundred feet long can be in place in minutes and finished in a day



The HESCO first began to be used in the security context in the 1990s. They can be stacked two or three high and make a formidable barrier for weapons. They are very cheap and can be assembled by people with little or no training. The are shipped collapsed and weigh very little. The Hesco comes in several sizes, dimensions of typical configurations are 4'6" x 3'6" x 32' to 7' x 5' x 100'.



Where quality search begins

## The Ilham Company Projects Details

NO	The Ilham Company Ongoing Project with JV in Afghanistan and Iraq and Libya	
1-	Fuel Supply Project for Military by subcontract in Kabul per month 800.000 LT Diesel L62 with Delivery for 6 month contract	\$ 7920.000.00
2-	Fuel Supply project for military by subcontract in Kandahar province per 400.000 LT Diesel L62 with Delivery for 6 month	\$ 40 80.000.00
3-	Fuel Supply project for military by subcontract in Helmand province per month 400.000 LT Diesel L62 with Delivery for 6 month	\$ 40 80.000.00
4-	Building Construction project of Conix 32 rooms for IRAQ army in Basra by subcontract	\$ 2.14400.00
5-	Labor Supply project in IRAQ country with salary every month with 450 \$ USD per Labor and the project is by Request every month	Per month charges
6-	Labor Supply project in Libya country with salary every month this project is by request of every month	
	<b>Our project is all by subcontract now and we have interest to prime contract and we are with full experience team in Afghanistan</b>	

## The Ilham Company Projects Details

<b>Ilham Company Completed more Projects at Afghanistan by Subcontract</b>		
6-	Nangarhar Gambiri Camp ASP Project Construction ( Dyncorp )	\$ 325000.00
7-	Nangarha Gambiri Camp Building Construction( Dyncorp )	\$ 640.000.00
8-	Nangarhar Gushta ANP Construction ( US Army Corps )	\$ 7 15000.00
9-	Nimrooz ANP Construction ( US Army Corps )	\$ 2000.000.00
10-	Helmand - 27 vehicles at Camp Shorab vehicles Maintenance by subcontract for 6 month	\$ 356400.00
11-	Helmand - Camp Dwyer 17 Vehicles Maintenance every 15 days for 6 month	\$ 2 55000.00
12-	Helmand Camp Leatherneck 12 hilux Vehicles for Rental per month 3200 \$ with maintenance every 15 days for one year	\$ 460.800.00

## The Ilham Company Projects Details

<b>THE ILHAM COMPANY SUBCONTRACT PROJECTS</b>		
13-	Helmand Camp Dwyer 4 Caster Vehicles for Rental per month \$ 4200 USD per each vehicle for 6 month	\$ 100.800.00
14-	Helmand Garemsir Construction Project for afghan telecom	\$ 116.000.00
15-	Survey project for US Company from Kandahar to Helmand from Helmand city to Sangin from sangin to Musa Qala from Musa Qala to Band Kajaki, the Afghanistan Transmission Line Survey photography only with digital camera	\$ 50.000.00
16-	<b>The Ilham Company Telecommunication Service at all Afghanistan</b>	
16-	<b>Our Company completed the IT ( Technology Project with Construction and Installation and Transportation of Equipment's And Materials at all Afghanistan</b>	
	<b>From 2003 - 2008 we are completed the Afghanistan Telecommunication Services</b>	
16-	We are completed the Rshan telecommunication service projects in kabul , kandahar , helmand, ghore ( chegh charan )	\$ 4 35000.00

## The Ilham Company Projects Details

<p>17-</p> <p>18-</p> <p>19-</p> <p>20-</p>	<p>We are completed the Etisalat telecommunication service projects The construction and Installation with transportation of Equipments at Kabul Gazni, qalat, Kandahar , Helmand , Herat, Kunduz , Mazar e sharef , Takhar , Sare pol , Samangan , baghlan, pole khumri , Jabul saraj , chari kar, gul bahar, Panjshir, karabagh, Estalif,merbacha kut, and more.....</p> <p>( ROSHAN - AWCC-MTN AREEBA-ETISALAT ) And Afghanistan National TV at all Afghanistan</p> <p>We are completed the Afghan telecommunication service projects The construction and Installation with transportation of Equipments at Kabul Gazni, qalat, all Kandahar , Helmand , Herat, Ghore Chegh charan , Daikundi , Uroozgan , Bamyan , Logar ,Garemser Helmand , Nawa Helmand</p> <p>We are Completed the MTN and Roshan and AWCC</p> <p>Services in this all provinces Helmand - Lashkar gah. Graem ser . Nawa. Herat . Badghis .Ghure Chekhcharan.Daikundi . Urozgan.Bamyan.Pole khumri. Samangan. Mzar e sharif. Kunduz.Takhar.Nangarhar . laghman. Logar Pakteka.Sharana. Farah and Nimrooz Provinces</p>	<p>\$ 8.75000.00</p> <p>\$ 330.000.00</p> <p>\$ 475 000.00</p>
---	--	--

## When quality search begins

### QC Manager:

The assigned QC manager is responsible to inspect and review documentation for construction of road pavements, repairing/ maintenance and testing of selected times, both progressively during construction and after the work is completed. The QC Manager is responsible to assure adherence to the construction quality control plan.

The QC manager is responsible to verify adherence to the Civil/ Architectural specifications for all civil related work. QC Manager shall support contractor civil-related, installed commodities.

The QC manager shall perform surveillance inspection on all excavation areas on a daily basis prior to backfilling and compacting on all excavation areas on a daily basis prior to backfilling and compacting. Compaction testing of the backfill shall be performed by an independent test laboratory.



### SECURITY PLAN:

#### Objectives

The first and very important object we care about for safety of working site is security, and it will always be maintained as zero errors. We will take a broad view of the security risks facing the firm and take prompt action to reduce our exposure. Everyone remembers the virus attack we had earlier this year, and we hope to avoid any other disaster like that! However, we hope that by taking a wider view, we are always able to plan for unknown threats.

**I.T.C** is taking responsibility for leading this review and ensuring that all the action items are carried out. **I.T.C** concerned about the risks **I.T.C** face, although having reviewed the plan, I am sure we can address them properly. This project has my full support and is a high priority for the business.

This security plan contains detailed technical security information about the plan, as called security requirements, and the controls implemented to provide protection against its risks and vulnerabilities. This security plan, at a minimum, is marked, handled, and controlled as a sensitive document. In addition, the security plan is dated for ease of tracking modifications and approvals.

#### Security Guards

**I.T.C** will hire one security guard for assurance of the access passes, safeguarding of un-issued passes, and collection of passes for employee's and vehicles. The security guard will use **I.T.C** ID for identifying. Following is information about the numbers of guards and their time to be on site.

Number of Guards for site: 1 person

Days/Hours Guards will be on-site: 24 hours and 7 days in weeks

### Responsibilities:

- Security guards shall record vehicle license plate information when the hours of operation have ceased, and save the information for a minimum of 90 days.
- Security guard shall check and control all the labors in the entry control point, during the entering to the project site, and let them if they have their ID cards.
- Security guard shall control all the labors inside the compound in order not to enter the site where **I.T.C** does not have planned to work.
- Security guard shall check all the trucks and vehicles those are related to the project of **I.T.C** during the entering to the construction site, and the trucks and vehicles will be allowed after the checking of permission cards.
- Security guard is responsible for physical security of materials, supplies, and equipment's.
- In case of any security problem, the security guard shall inform immediately the project manager or any acting manager on site.

**I.T.C** security plan will cover all the elements issued of the access passes, safeguarding of un-issued passes, construction security operations, lost passes, temporary vehicle passes, and collection of passes for employee's and vehicles on:

#### 1) Temporary absence;

In case of temporary absence of any worker, **I.T.C** investigating team will investigate and find the causes of temporary absence of the workers. And this whole process with briefing it will be informed accordingly to the **I.T.C** management. As we always try to maintain zero errors in security field those workers we get warning letters for first time and for second time termination surely. **I.T.C** management team will always be in touch with **I.T.C** Engineer with formal information of the plinth (Security field).

#### 2) Termination or release;

In site, the site managers, he will record all the information of the selected staffs and workers. Such as, workers home address, past experience, workers behavior, current position and any other information if needed. The referenced persons from **I.T.C**, HR department will be in site for serving .Even the subcontractor of **I.T.C** they will always maintain by word of **I.T.C** policy, all those policies will be informed to the subcontractors before enduring the contract.

**I.T.C** will take all documents which belong to the project, including ID card. And the issue will be reported to **I.T.C** Engineer.

#### 3) Termination or completion of contract.

In case of conflict with any workers or subcontractor, or completion of the contract **I.T.C** will terminate the contract, and the entire documents which belong to the project including ID cards will be cede from the terminated workers. And in any security cases about the terminated workers the reference of the workers will be always responsible.

When quality search begins

## Security Provisions

Adequate outside security lighting shall be provided at the **I.T.C** and subcontractors temporary facilities. And **I.T.C** is responsible for the security of its own facilities and equipment.

## Cooperation with Others

**I.T.C** will cooperate fully with other firms, consultants and subcontractors performing work under the program and this contract to which this contract pertains, upon being advised by the Contracting Officer that such firms or individuals have a legitimate interest in the program, have need-to-know status, and proper security clearance where required. And travel to the project site will be arranged by **I.T.C** Management in proper security. For this purpose the status of the way to project site and the project site will analysis by the **I.T.C** security department.



### STRATEGY PLAN

1. **I.T.C** has equipment and vehicles in several construction sites in various provinces of Afghanistan. The mobilization required to move the equipment to the project site will be very nominal and available equipment should be on site within a week after issue of **I.T.C**
2. Mobilization goal for a required equipment will required at least 2 days.
3. the **I.T.C** director General "General" and the rest of the company management staff for the project will be able to fully assemble during this initial mobilization period **I.T.C** currently has the available staff needed to work on this project

The first week of the project will be a crucial time for the proper assembling of all needed materials, manpower, and equipment. The efficiency of the project will be determined by the careful planning the takes place during this period.

The following objectives will be **I.T.C** accomplished during the first one month of the project:

A- Strategic Planning Meetings with **I.T.C** and other involved parties in the project.

These topics include but are not limited to:

Resource Acquisition

Health and Safety Regulations and Practices

Project Collaboration Needs

Economic Projections

Surveying and Engineering Analysis

Finalization of Design

Procurement Activities

Critical activities Completion

Preliminary project schedule submission

Perimeter securing and surveying

On site progress Assessments

Network Diagram – provided on the initial schedule submission and on monthly schedule update submissions.

Progress Meetings – held on a weekly basis.





When quality search begins

## Mixing procedures for concrete poured in a small site mixer



### Concrete work:

#### Concrete Specification:

- Design strength = 5-15N/mm<sup>2</sup>
- Minimum Cement content = 350 kg/m<sup>3</sup>
- Maximum water/cement Ratio = 20 liters/sack
- Maximum slump = 115 mm.

RCC reinforced concrete with mix 1.1.5:3 works will be **I.T.C** according to the standard drawing and will include (a) all execution disposal and temporary form work required necessary to complete the work (b) all back filling alongside and over the culverts watering in compaction. The rate tendered would be all-inclusive to complete the works and is to be measured volume of there works done.



### Cost in suit concrete class (PCC)

The company will provide the facility for procuring and furnishing of all materials, storage of material, privation of all plant, mixing, transporting, placing and compaction of the concrete, for the forming of inserts, constructions joints excepts mandatory construction joints, reaper to defective surface and finishing concrete surface as a specified

### Compaction in Small Areas



Where quality search begins

**US ARMY CORPS PROJETS BY SUBCONTRACT**  
Ilham Company Completed Projects by Subcontract at Afghanistan  
At Camp Gambiri & ANP Nangarhar– Shorabak Helmand – Camp Dwyer Helmand  
Sangin & musa Qala Helmand  
Farah and Nimrooz

**We are working in conflict zones and disaster areas globally.**

## IMAGES OF ARMY CAMPS IN AFGHANISTAN



## ILHAM COMPANY PROJECTS PHOTO

Project .at Camp Gambiri Nangarhar Afghanistan by Subcontract



Where quality search begins

**US ARMY CORPS PROJETS BY SUBCONTRACT**  
Ilham Company Completed Projects by Subcontract at Afghanistan  
At Camp Gambiri & ANP Nangarhar– Shorabak Helmand – Camp Dwyer Helmand  
Sangin & musa Qala Helmand  
Farah and Nimrooz

**Project at Camp Gambiri Nangarhar Afghanistan by Subcontract**



**ASP Project at Camp Gambiri and ANP Nangarhar by Subcontract**



**ASP Project at Camp Gambiri and ANP Project Nangarhar by Subcontract**



Where quality search begins

**US ARMY CORPS PROJETS BY SUBCONTRACT**  
Ilham Company Completed Projects by Subcontract at Afghanistan  
At Camp Gambiri & ANP Nangarhar– Shorabak Helmand – Camp Dwyer Helmand  
Sangin & musa Qala Helmand  
Farah and Nimrooz

Afghan Nation Police South Afghanistan



Project at Camp Gambiri Nangarhar Afghanistan



ASP Project at Camp Gambiri Nangarhar Afghanistan



Camp Gambiri Nangarhar Afghanistan



When quality search begins

**US ARMY CORPS PROJETS BY SUBCONTRACT**  
Ilham Company Completed Projects by Subcontract at Afghanistan  
At Camp Gambiri & ANP Nangarhar– Shorabak Helmand – Camp Dwyer Helmand  
Sangin & musa Qala Helmand  
Farah and Nimrooz

## UK ARMY SOUTH OF AFGHANISTAN



## US ARMY PROJECT AT CAPM GAMBIRI AFGHANISTAN



## ARMY PROJECT (HELMAND) SOUTH OF AFGHANISTAN



When quality search begins

**US ARMY CORPS PROJETS BY SUBCONTRACT**  
Ilham Company Completed Projects by Subcontract in Afghanistan  
At Camp Gambiri & ANP Nangarhar-Kandahar Air Base- Shorabak Helmand – Camp Dwyer Helmand  
Sangin & Musa Qala Helmand  
Farah and Nimrooz

**STON MASONRY WALL AT HELMAND**



**GUARD TOWER AT CAMP GAMBIRI**



**Camp Gambiri Nangarhar ASP P**



Where quality search begins



**IT Projects BY Ilham Company Inc.  
Telecommunication Sites Etisalat – MTN-AWCC-ROSHAN &  
Afghan Telecom & National TV in Afghanistan  
And MTN Africa (Ilham construction Company)**



Where quality search begins

## Completed telecommunication projects by Ilham company .

**Ilham Company. Completed 84 constructions Sites from 2004 to 2010  
In Afghanistan with transportation of equipment's and installation of GSM & Micro  
And Satellite Dish for Network**



### **For**

**AWCC/ AREEBA/ ROSHAN/ ETISALAT/ AFGHAN TELECOM  
& AFGHANISTAN NATIONAL TV**

### **In**

Kabul /ghazni/Qalat/Shajui/Shari safa/Kandahar /Helmand  
Nimrooz/Farah/Herat/ Ghur/Daikundi/Uroozgan/Bamyan/  
Mazar-e-Sharif/Kunduz/takhar/Samangan/Pole khumri/Jabil saraj  
Lowgar/Nangarhar/Paktika/khust/

**OUR COMPANY MAKE TOWER & SHELTER  
IN AFGHANISTAN FOR EVERY TELCOMMUNICATION**





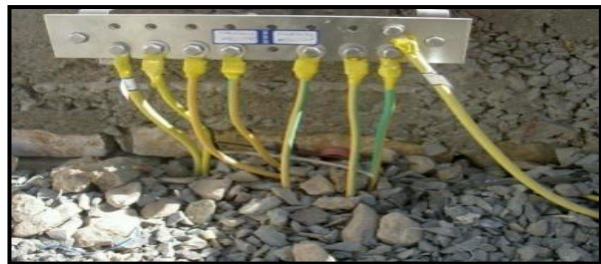
When quality search begins



## Ilham Company makes the compressor tower or caws

Our co. makes For all telecommunication of Afghanistan  
& we want make this tower for All tell services  
Fast time we are completed the Tower compressor in Afghanistan  
For Professional Track LLC Contractor of Roshan telecom  
Ilham Company Inc. have this compressor tower for Rent

**Ilham Company. Want to make complete sites with Equipment's for Rental in all over of Afghanistan for all telecommunications services**



Where quality search begins

## Profile

We are working in conflict zones and disaster areas globally.

### Contacts

United Arab Emirates Dubai / Sharjah

Cell: +971 (0) 555 86 2006

P.O.BOX-95885 Sharjah

Add: Nabah Road Behind of AL Mubarak Center 3<sup>rd</sup> Floor #301

Email: [ilham.constructionuae@gmail.com](mailto:ilham.constructionuae@gmail.com)

Email: [ilham.constructionuae@hotmail.com](mailto:ilham.constructionuae@hotmail.com)

Tender Tiger

[http://www.tendertiger.com/images/ilham\\_company\\_inc.pdf](http://www.tendertiger.com/images/ilham_company_inc.pdf)

LinkedIn Ilham Trading Company

[af.linkedin.com/pub/ilham-construction-company/55/b55/a71/](http://af.linkedin.com/pub/ilham-construction-company/55/b55/a71/)

<http://www.facebook.com/IlhamCompanyInc?ref=hl>

Twitter: [@IlhamCompanyInc](https://twitter.com/IlhamCompanyInc) @0799560061

<http://www.alibaba.com> ( Mirwais Jahangir )

